



# Maths Equipment Visual Guide for Children

This **guide gently explores what maths equipment is, how it supports learning, and what might be included — like rulers, protractors, compasses, calculators, or occasional extras and comforts.**

With **soft colours, friendly visuals, and clear language**, each panel supports **emotional regulation, sensory understanding, and relational trust.**

If maths tools feel unfamiliar or seem a little confusing sometimes, this guide is here to help things feel more manageable — **one calm line at a time.**

## Questions You Might Have

### **What is maths equipment?**

Maths equipment includes tools that help with measuring, drawing, calculating, and exploring shapes or numbers. These tools make mathematical work easier and more accurate.

### **What does a compass do in maths?**

A compass holds a pencil to draw circles and arcs — it moves gently around a fixed point. This tool is important for creating accurate circular shapes and geometric constructions.

### **Why is maths equipment important for learning?**

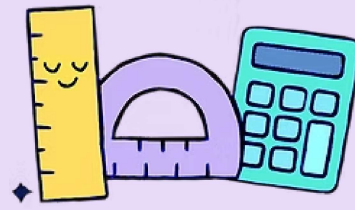
Maths equipment helps students measure accurately, draw precisely, and explore mathematical concepts hands on. These tools make abstract ideas more concrete and understandable.

## What's Inside Maths Equipment



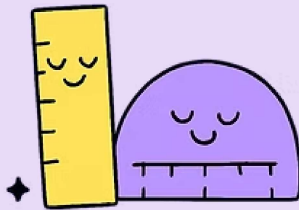
A sensory-safe guide to how rulers & calculators support shapes & numbers.

## Measure, Draw, Explore



Maths tools help with measuring, drawing, sums, and exploring shapes.

## Ruler & Protractor



Rulers make straight lines, and protractors measure angles to help with shapes.

## Compass & Pencil



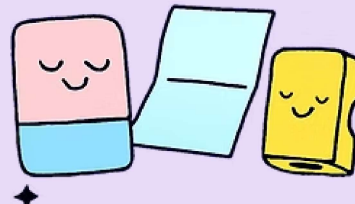
A compass holds a pencil to draw circles by turning around one spot.

## Calculator (Sometimes)



Some maths kits have a calculator to help with sums and number patterns.

## Extras & Comforts



Some packs include quiet comforts — like a fidget, tissues, or note from home.